



METAL STAINLESS STEEL

ACCESORIOS
INOXIDABLE:

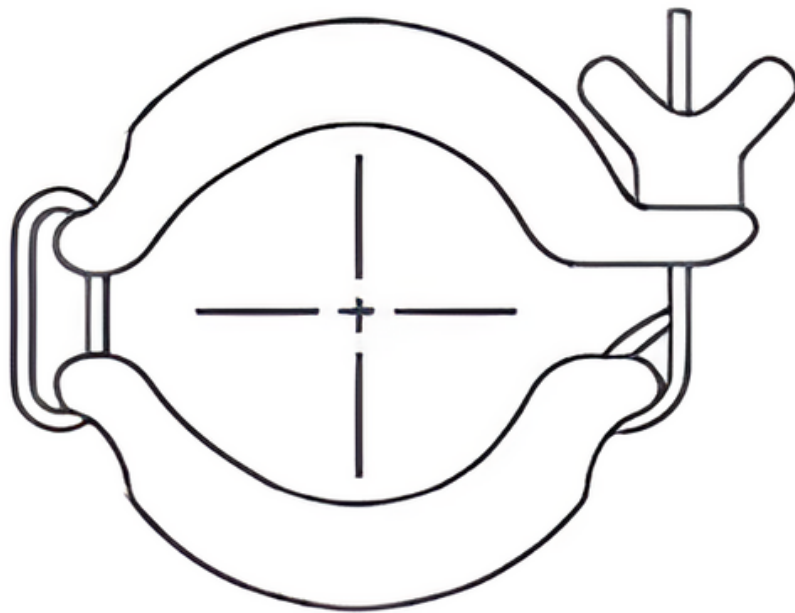
ENO

Índice

- 1.- Abrazadera Eno.
- 2.- Junta enlace Eno.
- 3.- Enlace Eno.
- 4.- Tapón Eno.
- 5.- Válvula de mariposa para soldar
- 6.- Válvula de mariposa macho/macho

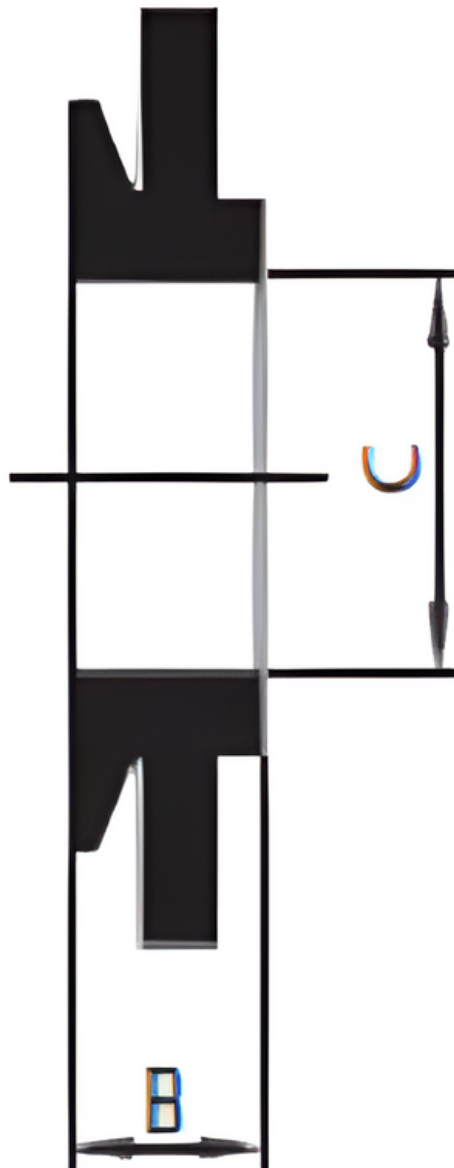
1.- Abrazadera Eno

| DN | gr |
|-----|-----|
| 40 | 200 |
| 50 | 250 |
| 60 | 300 |
| 70 | 350 |
| 80 | 400 |
| 100 | 450 |



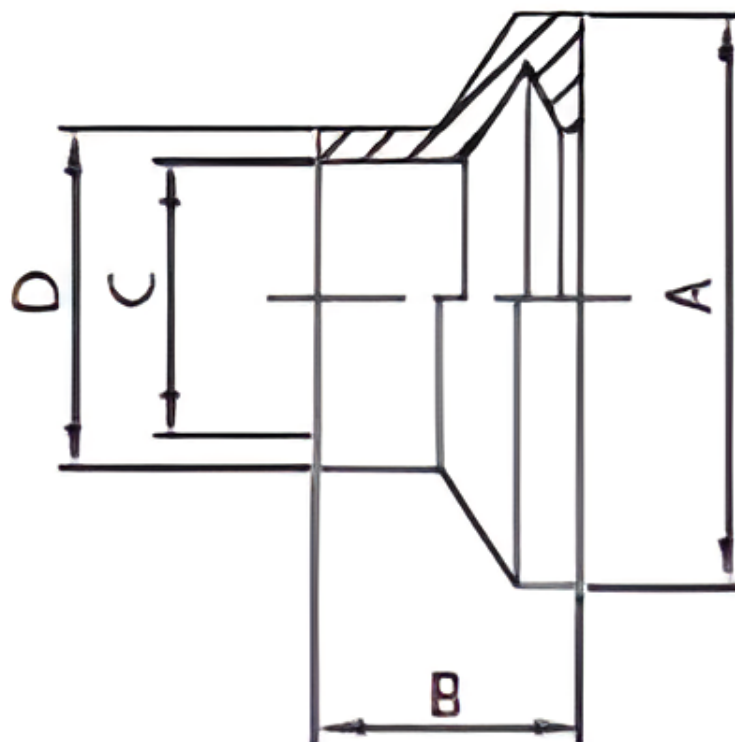
2.- Junta enlace Eno.

| DN | B | C |
|-----|------|-------|
| 40 | 13,0 | 40,0 |
| 50 | 13,0 | 50,0 |
| 60 | 13,0 | 60,0 |
| 70 | 14,0 | 70,0 |
| 80 | 14,0 | 80,0 |
| 100 | 14,0 | 100,0 |



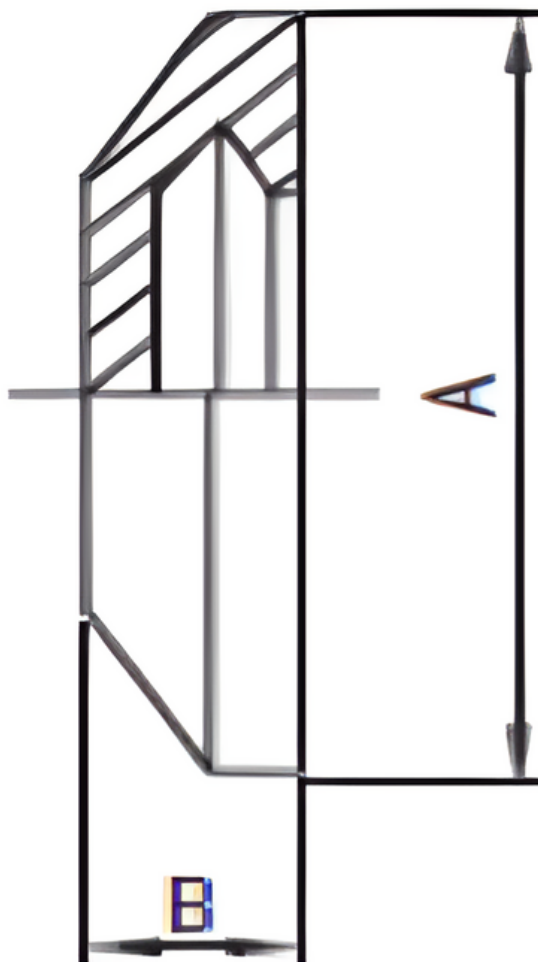
3.- Enlace Eno.

| ENLACE ENO | | | | | |
|------------|-------|------|------|-------|-----|
| DN | A | B | C | D | Gr |
| 40 | 65,0 | 25,0 | 37,0 | 40,0 | 130 |
| 50 | 75,0 | 30,0 | 49,0 | 52,0 | 160 |
| 60 | 86,0 | 32,0 | 57,0 | 60,0 | 210 |
| 70 | 98,0 | 38,0 | 66,0 | 70,0 | 260 |
| 80 | 109,0 | 38,0 | 81,0 | 85,0 | 300 |
| 100 | 128,0 | 38,0 | 97,4 | 101,6 | 350 |



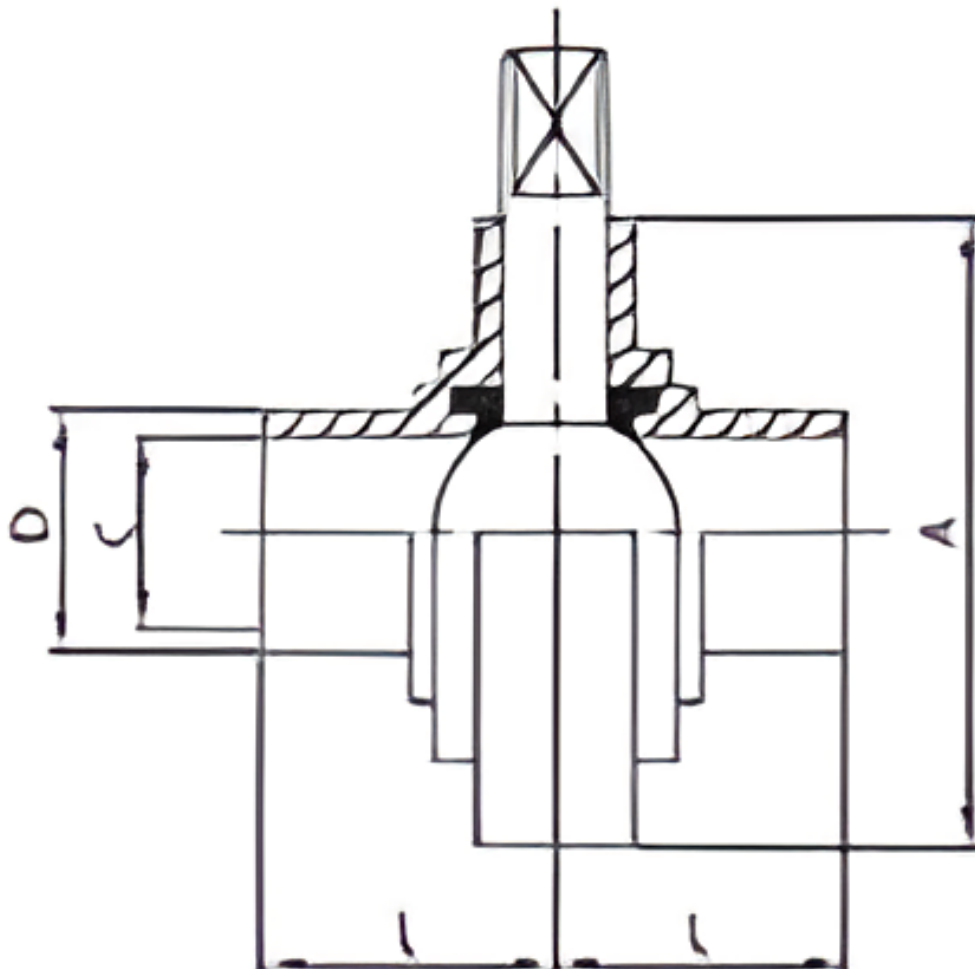
4.- Tapón Eno.

| DN | B | C | gr |
|-----|-------|------|-----|
| 40 | 65,0 | 15,0 | 100 |
| 50 | 75,0 | 17,0 | 150 |
| 60 | 86,0 | 17,0 | 250 |
| 70 | 98,0 | 17,0 | 300 |
| 80 | 109,0 | 17,0 | 325 |
| 100 | 128,0 | 17,0 | 350 |



5.- Válvula de mariposa para soldar

| VÁLVULA DE MARIPOSA MACHO/MACHO | | | | | |
|---------------------------------|-------|-------|-------|------|------|
| DN | A | C | F | L | Gr |
| 28 | 79,0 | 25,0 | 52-6 | 34,0 | 965 |
| 34 | 85,0 | 31,0 | 58-6 | 34,0 | 1225 |
| 40 | 92,0 | 37,0 | 65-6 | 38,0 | 1870 |
| 52 | 105,0 | 49,0 | 78-6 | 38,0 | 1870 |
| 70 | 125,0 | 66,0 | 95-6 | 38,0 | 2255 |
| 85 | 137,0 | 81,0 | 110-4 | 41,5 | 3200 |
| 101 | 157,0 | 97,6 | 130-4 | 44,0 | 3940 |
| 104 | 157,0 | 100,0 | 130-4 | 44,0 | 3940 |



6.- Válvula de mariposa macho/macho

| VÁLVULA DE MARIPOSA SOLDAR/SOLDAR | | | | | |
|-----------------------------------|-------|-------|-------|------|------|
| DN | A | B | C | L | Gr |
| 28 | 79,0 | 25,0 | 28,0 | 30,0 | 700 |
| 34 | 85,0 | 31,0 | 34,0 | 30,0 | 780 |
| 40 | 92,0 | 37,0 | 40,0 | 30,0 | 960 |
| 52 | 105,0 | 49,0 | 52,0 | 30,0 | 1230 |
| 70 | 125,0 | 66,0 | 70,0 | 30,0 | 1700 |
| 85 | 137,0 | 81,0 | 85,0 | 30,0 | 2230 |
| 101 | 157,0 | 97,6 | 101,6 | 30,0 | 2230 |
| 104 | 157,0 | 100,0 | 104,0 | 30,0 | 2230 |

